



Pro Bike 6000 Series



Preliminary Service Manual

June 28, 2004



Table of Contents

1. Preventative Maintenance
2. Display Settings
3. Diagnostic Lights
4. Parts & Diagrams

This is a Preliminary Service Manual. Additional volumes will follow as they become available.



Preventive Maintenance



Do not spray directly on the display or heart rate grips.



Spray on cloth first.



Check screws



Tighten pedals

To keep your bike in top condition, Star Trac strongly recommends performing regular daily, weekly and monthly preventive maintenance routines outlined below.

Daily Maintenance

- Remove excessive accumulations of dust, dirt and other substances by using a clean, soft cloth and a non-abrasive liquid cleaner, such as Formula 409™ or FANTASTIK™. Wipe down the exterior of the display panel, handle bars, seat, pedals, shrouds and heart rate grips.

Note: DO NOT spray the cleaner directly onto the display panel or heart rate grips.

Weekly Maintenance

Perform the following services each week:

- Vacuum the floor under and around the bike. Move the bike to another spot, if necessary, to vacuum thoroughly.
- Inspect the screws (i.e. display panel mounting screws) for security, and retighten if necessary.
- Inspect the display panel keypads for wear.

Monthly Maintenance

Perform the following services each month, or as needed:

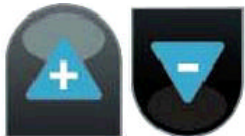
- Check that the seat, pedals and shroud are secure.
- Tighten the pedals onto their respective pedal cranks using a 5/8-inch (15mm) open end wrench.

Settings – Manager Mode

The following keys are used to modify Manager Settings:



Upper and Lower Data Information Window
SCROLL keys: Display the next and previous settings.






Increase and Decrease Level Keys: Adjust the value of the displayed setting up and down respectively, in increments of 1 unit.



OK Key: Updates (saves) the value of the display setting in the Flash memory, and exits Manager Mode.

The Manager Mode allows you to query and modify the basic settings of the bike.

Engaging Manager Mode

1. Press and hold the ,  and  keys together.
2. A beep will sound and the “MANAGER SETTINGS” will display momentarily in the information window.
3. Release all keys. “SERIAL NUMBER” will display in the information window.

The items that you may display and change:
Default values set in ()

Serial Number – Pro Bike serial number (0)

Date – Manufactures date for the Pro Bike (07/03)

Display Vers 1 – Display software version (N/A)

Display Vers 2 – Display software version (N/A)

LCB Vers – LCB software version (N/A)

Units – English = units of pounds, miles, feet inches; (English)
Metric = units of kilograms, kilometers, centimeters.

Time – Maximum time in minutes allowed for program, excluding warm-up and cool-down (20)

Weight – Default (to user), typical weight in lb (UNITS=English) or kg (UNITS = Metric) (155 lbs, 70 KG)

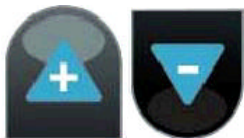
Language – Language is English, Dutch, French, German, Spanish, Swedish, Italian or Katakana (English)

Settings – Maintenance Mode

The following keys are used to modify Maintenance Settings:



Upper and Lower Data Information Window
SCROLL keys: Display the next and previous settings.



Increase and Decrease Level Keys: Adjust the value of the displayed setting up and down respectively, in increments of 1 unit.



OK Key: Updates (saves) the value of the display setting in the Flash memory, and exits Maintenance Mode.

The Maintenance Mode allows you to query and modify the basic settings of the bike.

Engaging Maintenance Mode

1. Press and hold the , and keys together.
2. A beep will sound and the “MAINTENANCE SETTINGS” will display momentarily in the information window.
3. Release all keys. “SERIAL NUMBER” will display in the information window.

The items that you may display and change:
Default values set in ()

Serial Number – Pro Bike serial number (0)

Date – Manufactures date for the Pro Bike (07/03)

Display Vers 1 – Display software version (N/A)

Display Vers 2 – Display software version (N/A)

LCB Vers – LCB software version (N/A)

Units – English = units of pounds, miles, feet inches; (English)
Metric = units of kilograms, kilometers, centimeters.

Time – Maximum time in minutes allowed for program, excluding warm-up and cool-down (20)

Weight – Default (to user), typical weight in lb (UNITS=English) or kg (UNITS = Metric) (155 lbs, 70 KG)

Language – Language is English, Dutch, French, German, Spanish, Swedish, Italian or Katakana (English)

Model – PB-UB = Pro Bike Upright

PB-RB = Pro Bike Recumbent

Nat Runner = Natural Runner (PB-UB)

OPER Hours – Total operating hours (0)

BATT Hours – Total battery use hours (0)

Quick Start – Number of times the Quick Start program was run since last reset (0)

Manual – Number of times the Manual program was run since last reset (0)

Warm Up – Number of times the Warm Up program was run since the last reset (0)



Settings – Maintenance Mode (cont.)

Auto Pilot – Number of times the Auto Pilot program was run since the last rest (0)

IHR Program – Number of times the Interval Heart Rate Control program was run since last reset (0)

CHR Program – Number of times the Constant Heart Rate Control program was run since last reset (0)

WI Program – Number of times the Watts Interval program was run since last reset (0)

CW Program – Number of times the Continuous Watts program was run since last reset (0)

Fit Test – Number of times the Fit Test program was run since last reset (0)

Alpine – Number of times the Alpine program was run since last reset (0)

Rndm Prog – Number of times the Random Hill program was run since last reset (0)

Comm Lost – Number of times a Comm Lost condition has occurred (0); Comm Lost occurs when communication between the Load Control Board (LCB) and display is lost.

Key Down – Number of times a Key Down condition has occurred (0); Key Down occurs when a key on the display is stuck closed.

LED Test – Access to integral LED test function.

Keypad Test – Access to integral keypad test function.

Heart Rate Test – Access to integral heart rate system test function.

Measurements – Access to integral measurements function.

Auto Status – Turns on/off the unsolicited status of the CSAFE feature.



Diagnostics – Display Codes

Star Trac Pro Bikes perform a self-test at the beginning of every workout. If a problem is detected, a message displays before or after the work out, depending on the nature of the problem.

Display Codes




Key Down – One or more keys on the display panel are stuck in the “on” position. This can occur if a user presses keys before the system is turned on.

Comm Lost – Communication between the Load Control Board (LCB) and the display are lost. This can occur if the display cable is not connected securely at install.

Diagnostics – Keypad Test

The Keypad Test can be used to verify that all keys are functioning on the display assembly.

To engage the Keypad Test

1. Enter the Maintenance Mode (see Settings – Maintenance Mode).
2. Press  until Keypad Test is display in the information window.
3. Press  to enter the Keypad Test.
4. Press each key on the display. Each time you press a key the information window will display which key have pressed.
5. To exit the keypad test, press .




If any of the keys do not respond, they may not be functioning and the display keypad may need to be replaced.



Diagnostics – Heart Rate Test

Heart Rate can be checked using the Heart Rate Test.




To verify heart rate operation:

1. Enter the Maintenance Mode (see Settings – Maintenance Mode).
2. Press  until Heart Rate Test is display in the information window.
3. Press  to enter Heart Rate Test.
4. The display will read TELEMETRY.
 - If checking contact heart rate it will read “CONTACT” and the heart rate number.
 - If checking Polar, the display will read “TELEMETRY” and the heart rate number.
5. To exit the heart rate test, press .

Diagnostics – Measurements

Measurements can be done to verify the voltage of the battery.

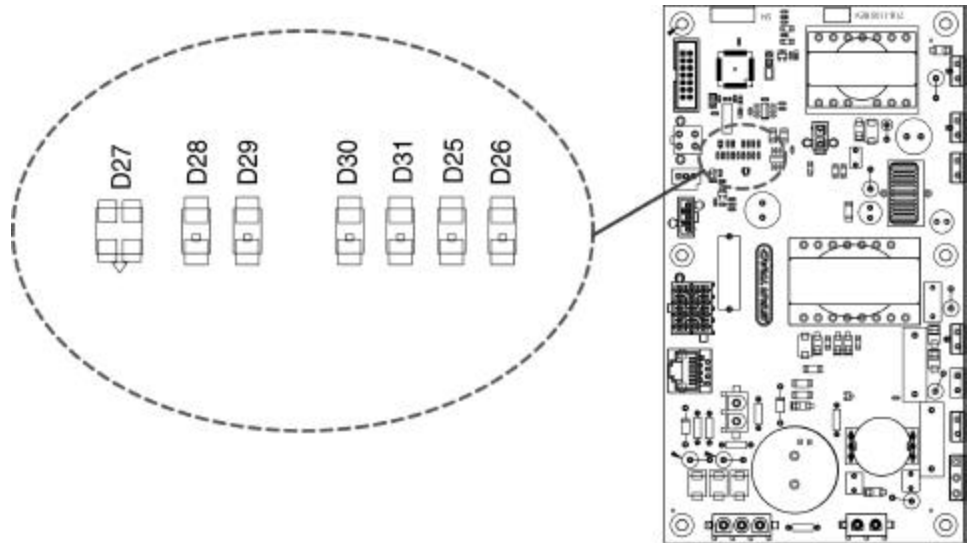
To verify the battery voltage:

1. Enter the Maintenance Mode (see Settings – Maintenance Mode).
2. Press  until Measurements is display in the information window.
3. Press  to enter Measurements.
4. The display will read “BATT VLT = “and the voltage of the battery.
5. To exit the measurements, press  .

Diagnostics - LCB Diagnostic Lights

The Load Control Board (LCB) on the Pro Bike has 6 diagnostic lights (LED's) to help troubleshoot electrical issues.

Below is a list of the lights and what they represent:

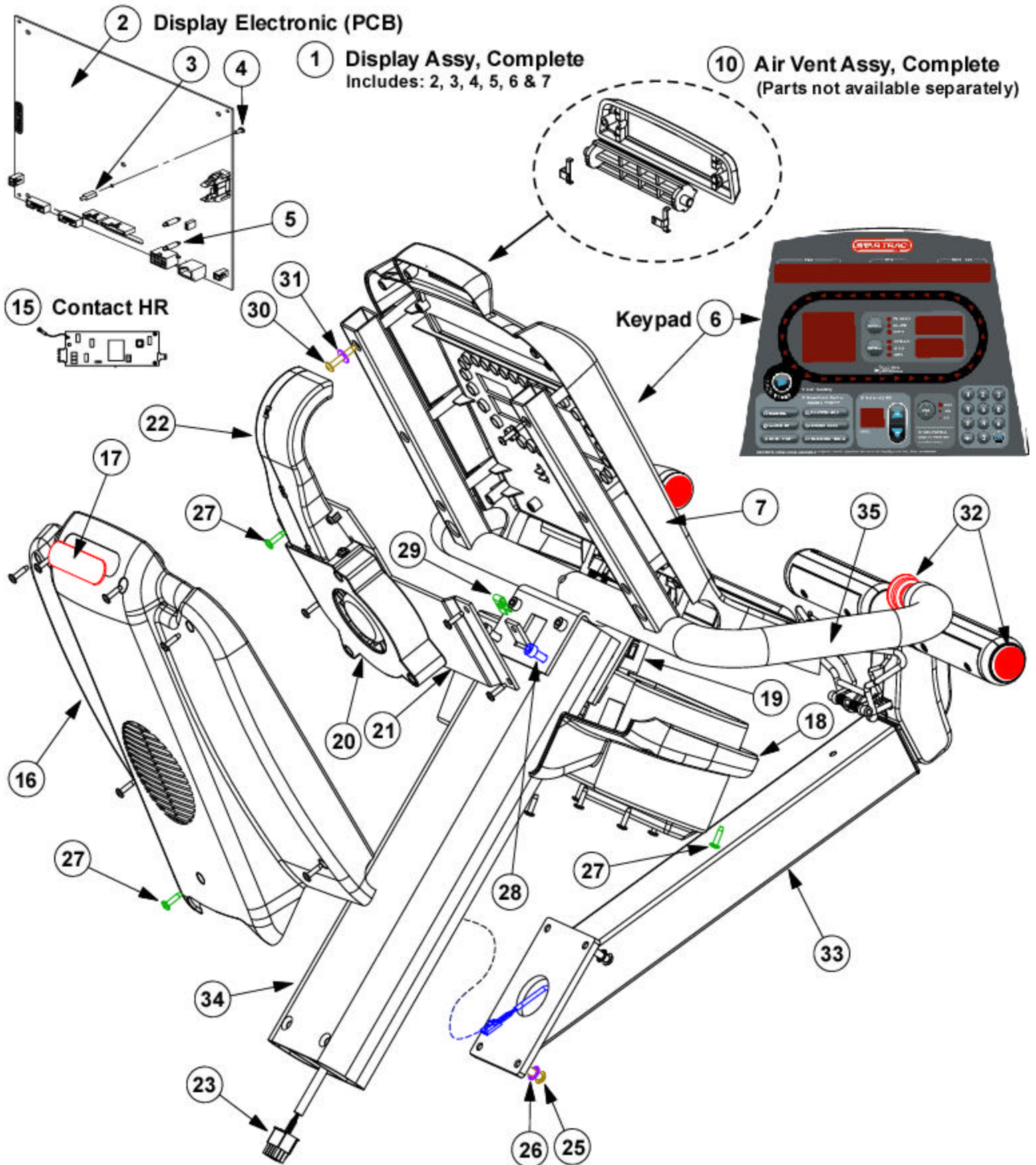


D27	RPM Converter Status	Light is green when main converter is on. Amber if the RPM is outside the proper boundaries. Red if the converter is off.		
D25	Serial Communication	Flashes when the display is communicating with the LCB		
D28	RPM Signal	Flashes based on the input from the tach pulse		
D26	Not Functional			
D29	+12 VDC On	Is on when + 12 VDC is present in the system		
D30,D31	Battery Charge Status	D30	D31	Status
		OFF	OFF	Trickle Charge Mode
		OFF	ON	Bulk Charge Mode
		ON	OFF	Over Charge Mode
		ON	ON	Float Charge Mode



Pro Bike - 6000 Series

6400 Display & Handrail Assy





pro bikes



Pro Bike 6K Parts List

6400 Display & Handrail Assy

No.	Part Number	Description
1	800-4011	Disp Assy, Complete, PB6k
2	718-1108	Disp Elec, PB6k
6	050-1876	Keypad Overlay, PB6k
7	020-6413	Disp Housing, Front, PB6k
10	718-1107	Air Vent Assy
15	718-1129	Pcb, Hr Contact, Ub/rb Pro
16	020-6411	Disp Housing, Back, PB6k
17	050-1887	Label, Logo, ST, Pro Bike
18	020-6416	Disp Housing, Bottom, PB6k
20	718-1122	Assy, Fan, PB6k
21	020-6455	Brkt, Fan Support, PB6k
22	020-6415	Funnel, Air Guide, PB6k
32	140-3253	Endcap, 1.0x1.0" Tube

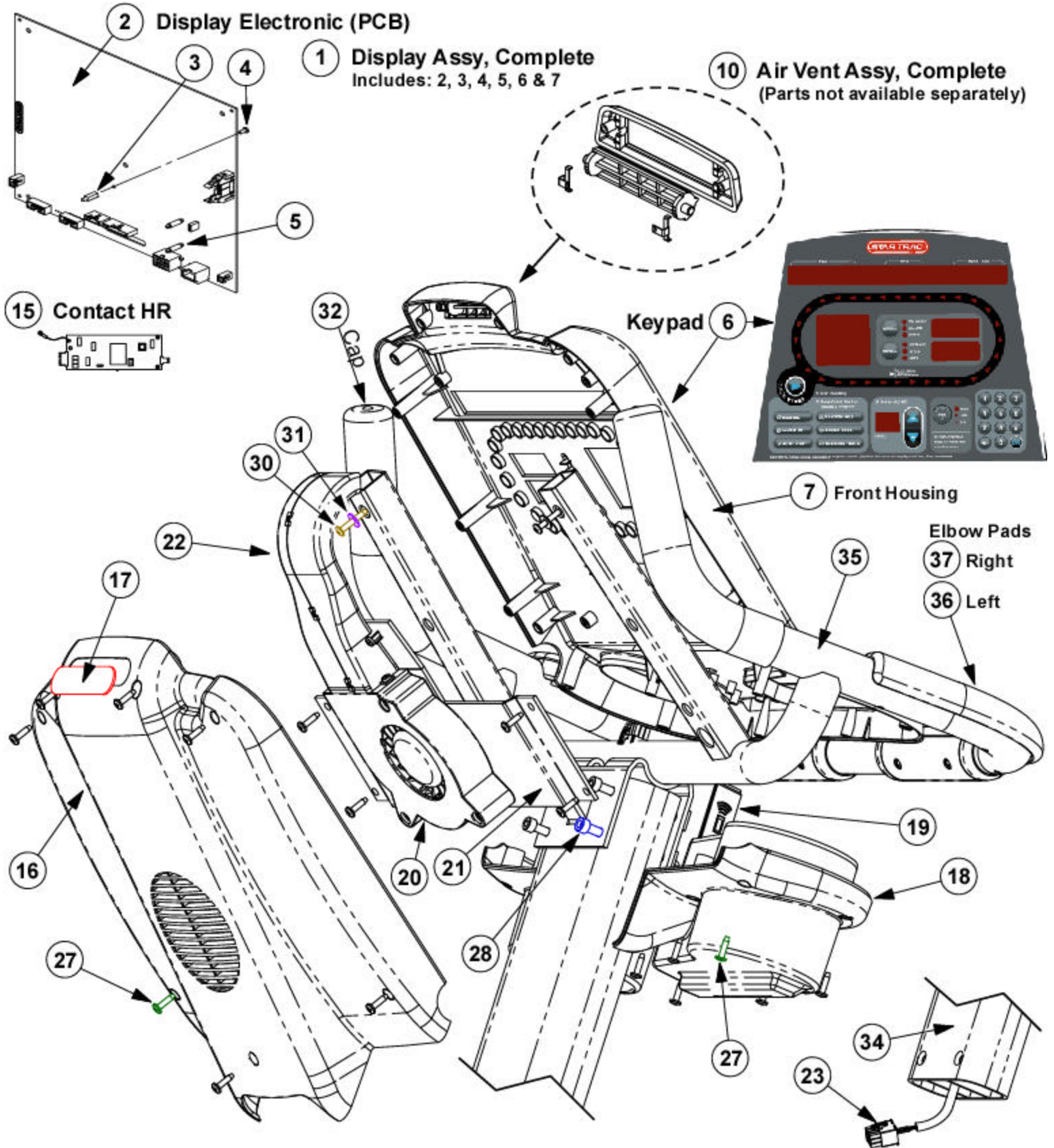
Prices are subject to change with out notice. Star Trac will not be responsible for any pricing discrepancies that were quoted from this parts list. For the most up-to-date pricing, please check the Product Support web site at <http://support.startrac.com> to obtain a parts quote. On line quotes will be honored for 15 days after the date they were generated.

Rev # 040621



Pro Bike - 6000 Series

6300 Display & Handrail Assy





pro bikes



Pro Bike 6K Parts List

6300 Display & Handrail Assy

No.	Part Number	Description
1	800-4011	Disp Assy, Complete, PB6k
2	718-1108	Disp Elec, PB6k
6	050-1876	Keypad Overlay, PB6k
7	020-6413	Disp Housing, Front, PB6k
10	718-1107	Air Vent Assy
15	718-1129	Pcb, Hr Contact, Ub/rb Pro
16	020-6411	Disp Housing, Back, PB6k
17	050-1887	Label, Logo, ST, Pro Bike
18	020-6416	Disp Housing, Bottom, PB6k
20	718-1122	Assy, Fan, PB6k
21	020-6455	Brkt, Fan Support, PB6k
22	020-6415	Funnel, Air Guide, PB6k
32	140-3253	Endcap, 1.0x1.0" Tube
36	020-6420-01	Pad, Elbow Support, Lt
37	020-6420-02	Pad, Elbow Support, Rt

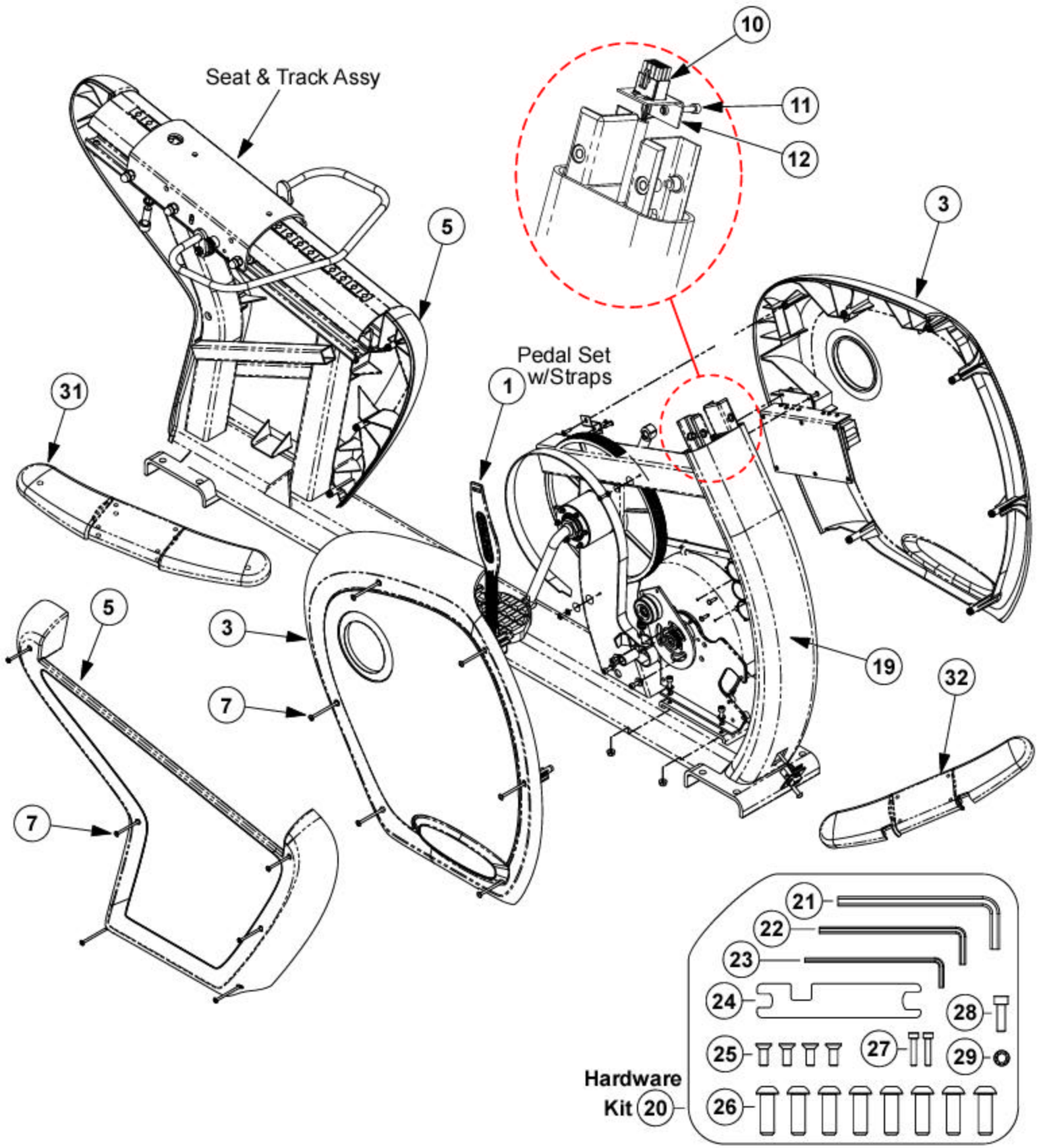
Prices are subject to change with out notice. Star Trac will not be responsible for any pricing discrepancies that were quoted from this parts list. For the most up-to-date pricing, please check the Product Support web site at <http://support.startrac.com> to obtain a parts quote. On line quotes will be honored for 15 days after the date they were generated.

Rev # 040621



Pro Bike - 6000 Series

6400 Frame & Shroud Assy





pro bikes



Pro Bike 6K Parts List

6400 Frame & Shroud Assy

No.	Part Number	Description
1	800-4009	Pedal Set, PB6k
3	800-4007	Shroud Kit (Frt-Lt-Rt), RB6k
5	800-4008	Shroud Kit (Rear-Lt-Rt), RB6k
19	720-0068	Frame, 6400
20	720-5056	Hardware Kit, 6400

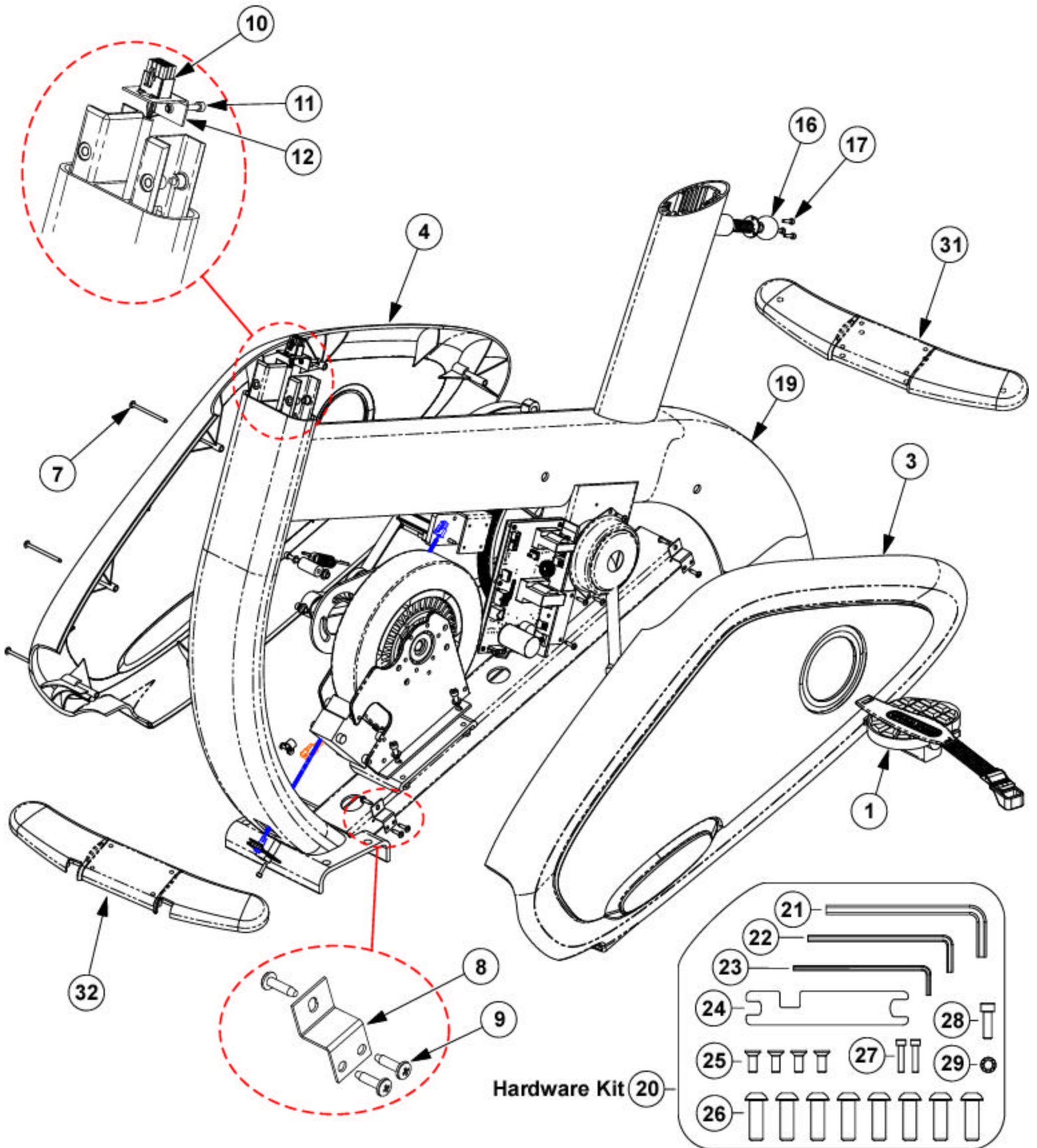
Prices are subject to change with out notice. Star Trac will not be responsible for any pricing discrepancies that were quoted from this parts list. For the most up-to-date pricing, please check the Product Support web site at <http://support.startrac.com> to obtain a parts quote. On line quotes will be honored for 15 days after the date they were generated.

Rev # 040621



Pro Bike - 6000 Series

6300 Frame & Shroud Assy





pro bikes



Pro Bike 6K Parts List

6300 Frame & Shroud Assy

No.	Part Number	Description
1	800-4009	Pedal Set, PB6k
3	800-4016	Shroud Kit (Lt-Rt), Ub6k
16	718-5051	Seat Stop Pin Assy
19	718-1093	Frame, Weldment
20	718-5066	Hardware Kit, 6300
31	020-6409	Foot, Rear, PB6k
32	020-6410	Foot, Front, PB6k

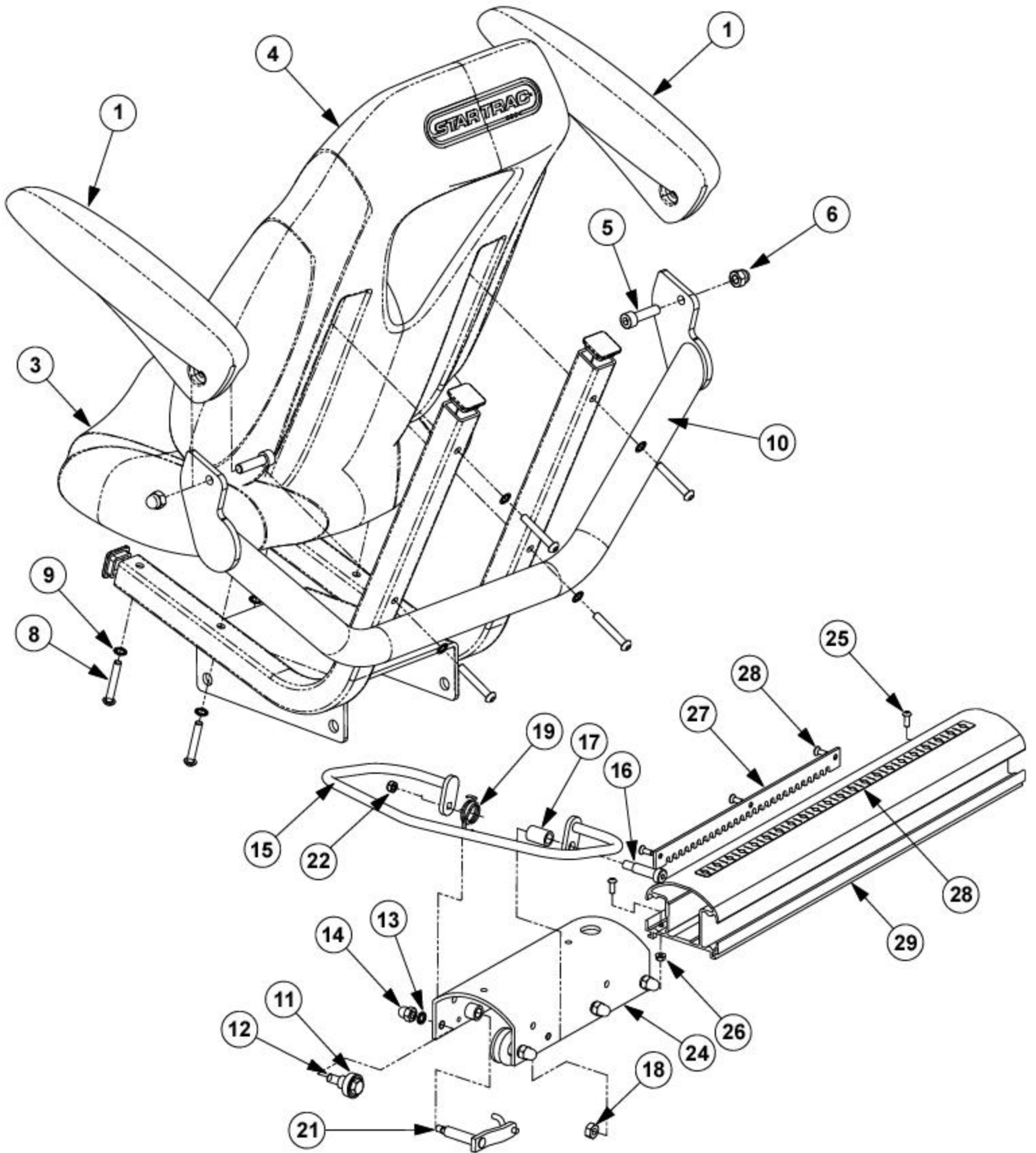
Prices are subject to change with out notice. Star Trac will not be responsible for any pricing discrepancies that were quoted from this parts list. For the most up-to-date pricing, please check the Product Support web site at <http://support.startrac.com> to obtain a parts quote. On line quotes will be honored for 15 days after the date they were generated.

Rev # 040621



Pro Bike - 6000 Series

6400 Seat & Track Assy





pro bikes



Pro Bike 6K Parts List

6400 Seat & Track Assy

No.	Part Number	Description
1	800-4014	Arm Rest Set, Rb6k
3	800-4012	Seat, Bottom, Rb6k
4	800-4013	Seat, Backrest, Rb6k
10	720-0077	Seat Frame, 6400
19	140-3254	Spring, Latch, Rb, Pro Bike
21	020-6430	Seat, Latch Pin, Rec
27	020-6441	Seat Rack, RB6k
28	050-1865	Sticker, Position

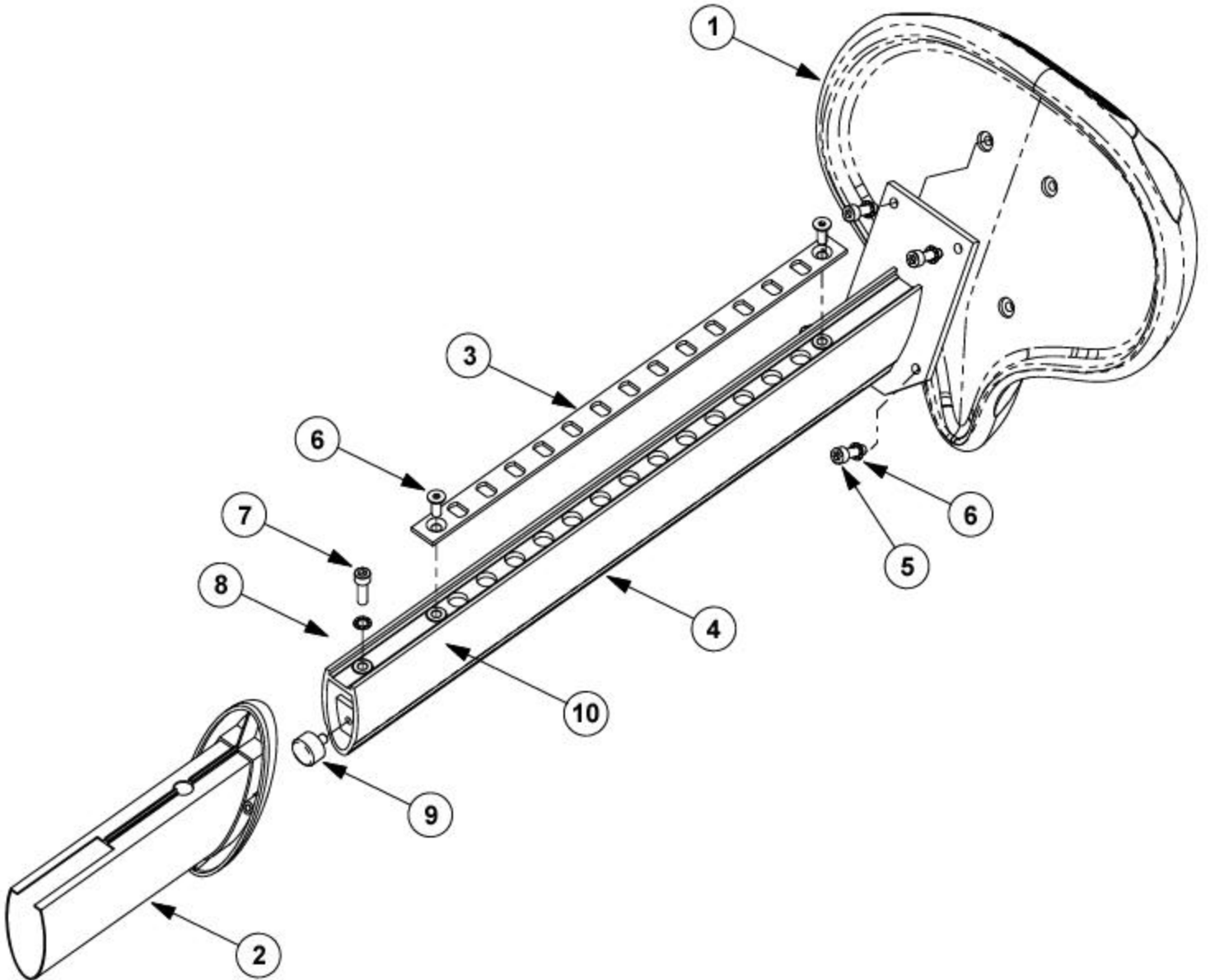
Prices are subject to change with out notice. Star Trac will not be responsible for any pricing discrepancies that were quoted from this parts list. For the most up-to-date pricing, please check the Product Support web site at <http://support.startrac.com> to obtain a parts quote. On line quotes will be honored for 15 days after the date they were generated.

Rev # 040621



Pro Bike - 6000 Series

6300 Seat Assy





pro bikes



Pro Bike 6K Parts List

6300 Seat Assy

No.	Part Number	Description
1	800-4017	Seat, Ub6k
2	020-6451	Sleeve, Seat Post, UB6k
3	020-6440	Rack, Seat Post, UB6k

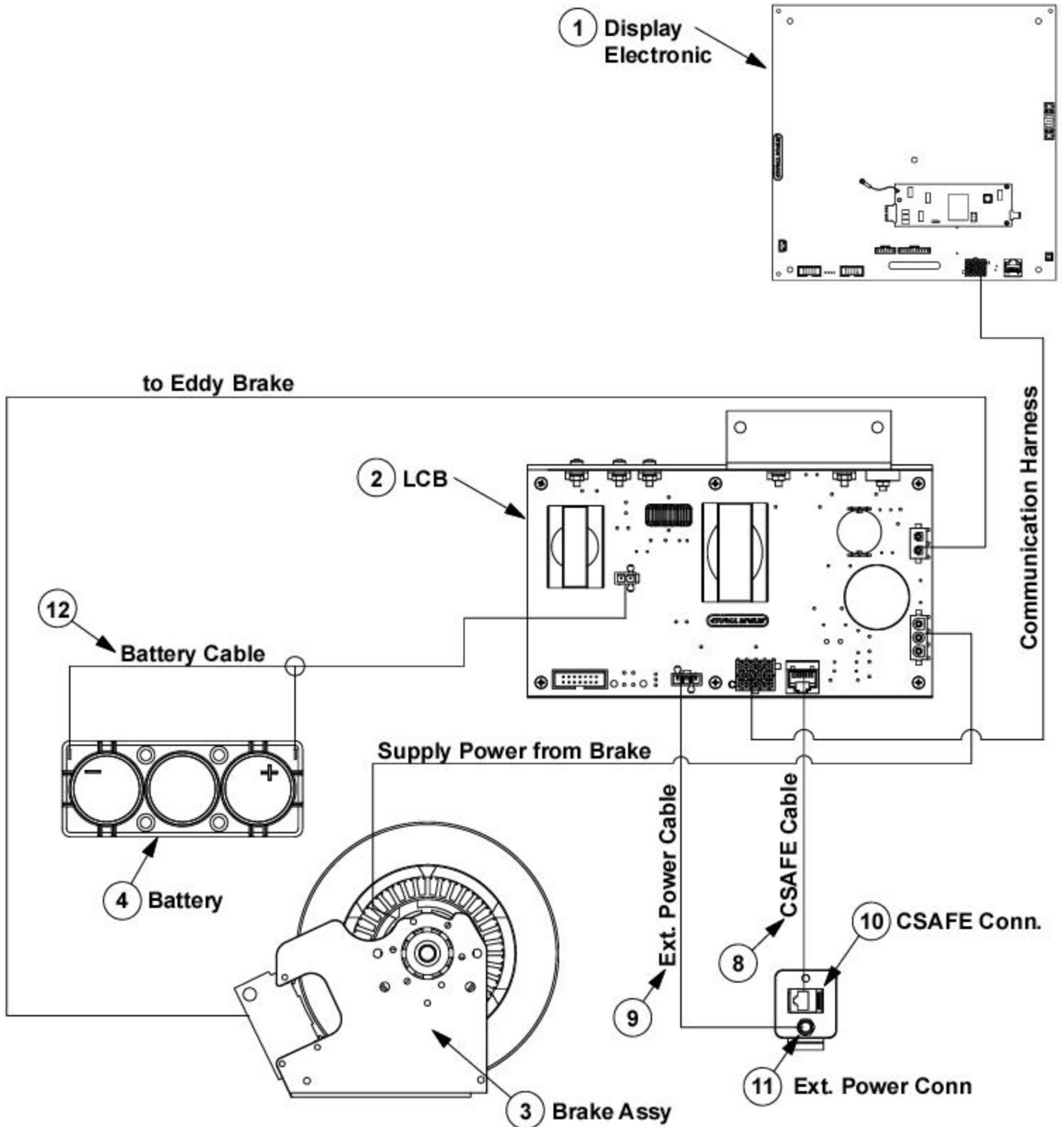
Prices are subject to change with out notice. Star Trac will not be responsible for any pricing discrepancies that were quoted from this parts list. For the most up-to-date pricing, please check the Product Support web site at <http://support.startrac.com> to obtain a parts quote. On line quotes will be honored for 15 days after the date they were generated.

Rev # 040621



Pro Bike - 6000 Series

6300 & 6400 Electrical Assy





pro bikes



Pro Bike 6K Parts List

Electrical Assy

No.	Part Number	Description
1	718-1108	Disp Elec, PB6k
2	800-4006	Lcb, PB6K
3	800-4002	Brake Assy, PB6k
4	580-0305	Battery, 6v, 2.5a, Ee/Nr/ProBik
8	718-1123	Harness Assy, Csafe Extn
9	718-1125	Harness Assy, Ext Pwr Extn
12	718-1127	Harness Assy, Battery

Prices are subject to change with out notice. Star Trac will not be responsible for any pricing discrepancies that were quoted from this parts list. For the most up-to-date pricing, please check the Product Support web site at <http://support.startrac.com> to obtain a parts quote. On line quotes will be honored for 15 days after the date they were generated.

Rev # 040621



pro bikes



Pro Bike 6K Parts List

Crank Assy

No.	Part Number	Description
1	800-4004	Crank Assy w/Pulley

Prices are subject to change with out notice. Star Trac will not be responsible for any pricing discrepancies that were quoted from this parts list. For the most up-to-date pricing, please check the Product Support web site at <http://support.startrac.com> to obtain a parts quote. On line quotes will be honored for 15 days after the date they were generated.

Rev # 040621